

UNDERSTANDING

Source Water Protection

THE GOAL: Prevent contaminants from entering waterways that serve as sources for our drinking water.

THE BENEFITS:

- ✓ Protects our drinking water supplies.
- ✓ Ensures a healthy habitat for countless species.
- ✓ Decreases need for costly, complex treatments to remove pollutants.

The source water for Middleburg Municipal Authority is from surface water intakes and groundwater wells.

Your water system has volunteered to participate in the Pennsylvania Department of Environmental Protection's Source Water Protection Technical Assistance Program (SWPTAP).

THROUGH SWPTAP: A plan will be developed to guide your water system's source water protection efforts in the future. Once complete, it will be available for all customers to learn more about assisting with our source water protection efforts.



More Ways to Help



Minimize your use of pesticides and herbicides on your lawn and garden.



Bring hazardous waste (ex: paint) to recycling facilities.



Don't pour motor oil on the ground or in a storm drain. Dispose of motor oil at garages that recycle it.



Pump out your septic system every two or three years.



Do not flush any unwanted or leftover medications down the toilet or sink drain. Dispose of them at a disposal event or collection box.



Don't dump pool water into a creek or storm drain. Direct it to a sanitary sewer or foliage once chlorine diminishes.



Remember that anything you throw or store on the ground or put down the toilet will find its way into waterways.

If you observe a chemical spill, call the PA Department of Environmental Protection at 800-541-2050.

CITIZEN'S GUIDE:

Protecting Your Drinking Water



Middleburg Municipal Authority

This program is funded by the PA Department of Environmental Protection's Source Water Protection Technical Assistance Program.

WHAT IS A WATERSHED?

A watershed is all the land that drains to the same river or lake.

Water travels from the highest points at the watershed edge to the lowest point at the bottom of the watershed.

Wherever you are, you are in a watershed!



Source Water Contamination:

What happens when contaminants get into our water supply?

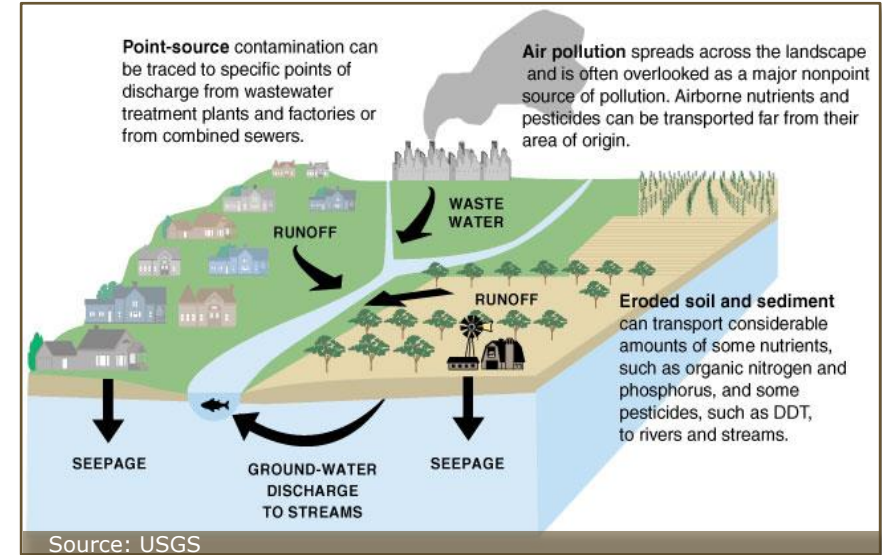
A water supply can become polluted when substances that are harmful to human health enter the water source.

Once drinking water is contaminated, it must be treated or abandoned as a drinking water source.

This expense can be avoided through source water protection.

Common pollutants:

- ✓ Gasoline or oil from leaking tanks
- ✓ Nitrate and pesticides from agriculture and lawns
- ✓ Pathogens from livestock and pet waste
- ✓ Salt from winter road maintenance
- ✓ Chemicals from industrial facilities



How do contaminants get to our water?

When it rains, some water travels over the land surface. This is called *surface runoff* or *stormwater*.

As stormwater flows, it picks up any contaminants lying on the surface. Those small streams join to form larger and larger rivers, until the water – and any contaminants it's carrying – reach the final lake or river.

Some precipitation, instead of traveling over the land, will percolate into the soil and reach the *groundwater*. Similarly, the groundwater may pick up nitrates and chemicals. The groundwater ultimately flows into one of the rivers or lakes on the watershed as well.

Once a water source becomes contaminated, the cleanup often takes many years and can be very expensive. Protecting our drinking water is a community effort.

Middleburg Municipal Authority

13 North Main Street | Middleburg, PA 17842
(570) 837-2533 | <https://middleburgborough.com/>

The members of your water system work around the clock to provide top quality tap water to every tap. It is a task that we take very seriously. For more information, contact us.